

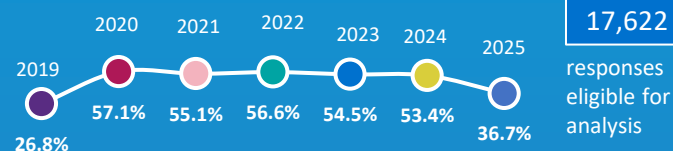


2025 Medical Training Survey

INTRODUCTION

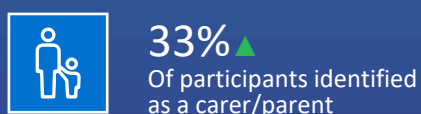
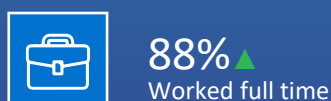
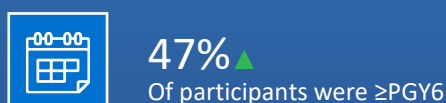
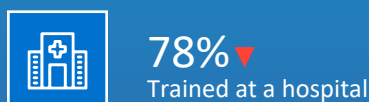
The Medical Board of Australia's Medical Training Survey (MTS) is a national, profession-wide survey of doctors in training in Australia. 18,276 trainees responded to the survey, of which 17,622 were eligible for analysis. The MTS is confidential and generates data used to strengthen medical training in Australia. The MTS is conducted annually with doctors in training, with 2025 being the seventh year.

NATIONAL RESPONSE RATES



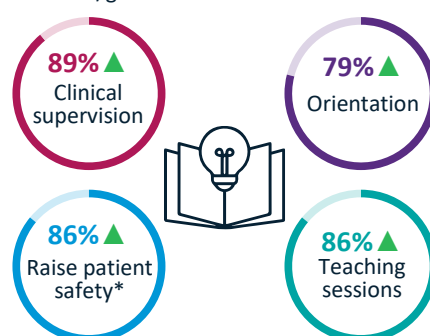
▲ ▼ Significant difference between the results of 2024 and 2025

SAMPLE PROFILE



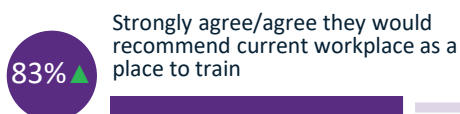
QUALITY OF TRAINING

% excellent/good



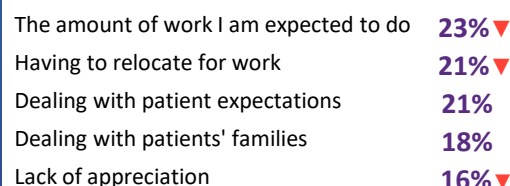
*Excludes those who reported that they did not receive this training

RECOMMEND TRAINING

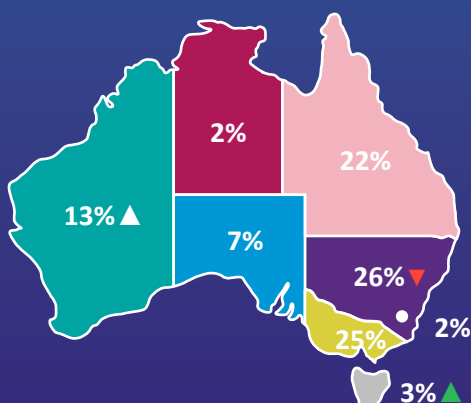


45% OF TRAINEES HAD A HEAVY / VERY HEAVY WORKLOAD IN SETTING

TOP 5 ADVERSE IMPACTS ON WELLBEING

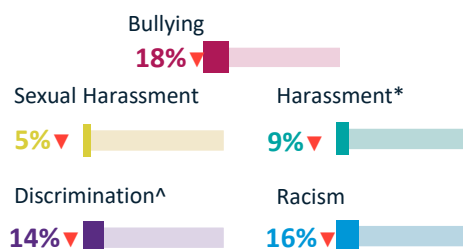


28% OF TRAINEES HAD ACCESSED FLEXIBLE WORK ARRANGEMENTS



The above map shows the current term/rotation or placement % by state.

3 IN 10 TRAINEES EXPERIENCED AND/OR WITNESSED BULLYING, HARASSMENT, SEXUAL HARASSMENT, DISCRIMINATION AND/OR RACISM



Percentages of trainees that have experienced and/or witnessed each of these as an individual event
* Excluding Sexual Harassment ^Excluding Racism

EFFECT OF EXPERIENCING BULLYING/HARASSMENT ON MEDICAL TRAINING

